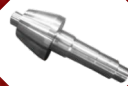
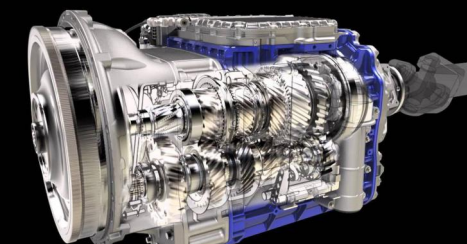
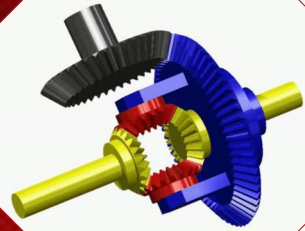
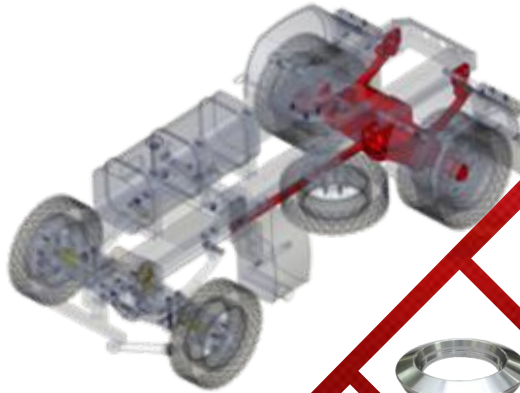
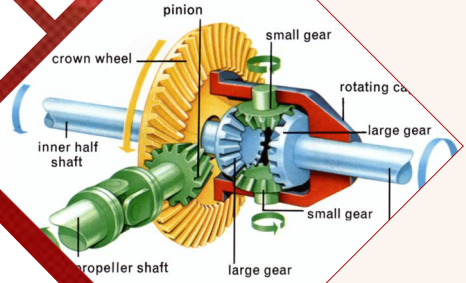
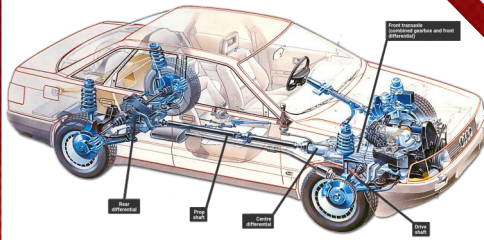


 www.knldriveline.com



KNL DRIVELINE PARTS PVT. LTD.



IATF 16949: 2016
CERTIFIED COMPANY

HISTORY - A PASSION FOR INNOVATIVE GROWTH

Started operations in 2010. KNL Driveline Parts Pvt. Ltd. has established itself as one of the most prominent and reliable player in Forging industry. The company has a well experienced team of professionals & infrastructure to manufacture products used in Automotive, Tractor, Earth moving and Oil & Gas industries.

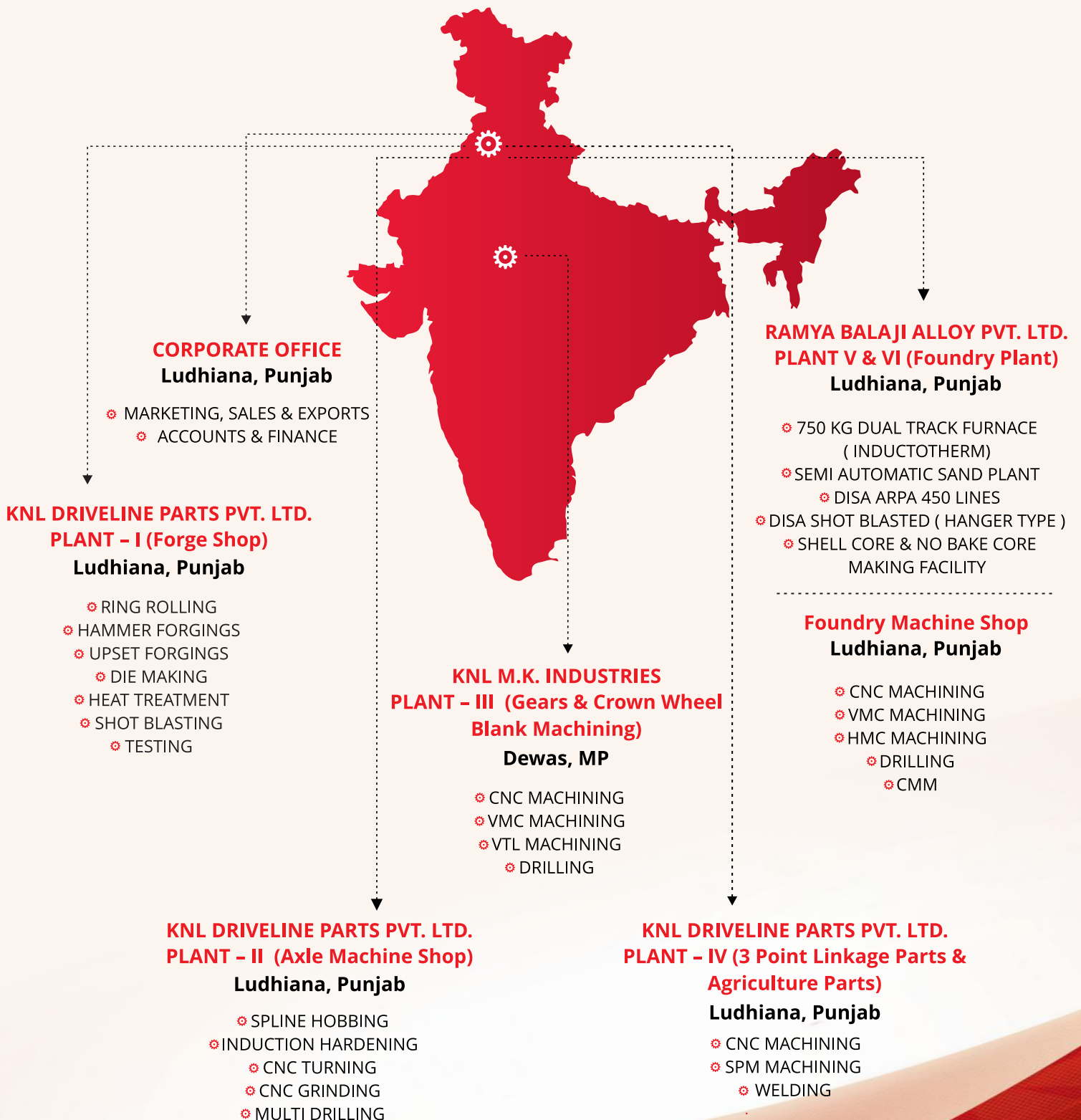
KNL Driveline is a leading and technologically advanced auto component manufacturer serving the forging industry for decades. It is one of the recognized full service company supplying forged engine and drive-line components. From the highways to the oil fields, from the oceans to the mines - these are the places you will find KNL Driveline Parts Pvt. Ltd.



OVERVIEW

- ⚙️ Leading Forging facility in India.
- ⚙️ Capacity of 24,000 Tons of Forgings per annum.
- ⚙️ **Ring Rolling** Facility for crown wheel & ring gear manufacturing.
- ⚙️ An IATF 16949 Company by TUV SUD group.
- ⚙️ Value Added Supplier to Automotive, Earth Moving, Oil & Gas Sectors.
- ⚙️ Manpower Strength : 200+
- ⚙️ Perpetually profitable organization since inception.
- ⚙️ Strong Ethics and deep bonding.

GROUP MANUFACTURING FACILITIES - INDIA



OUR INFRASTRUCTURE - PLANT I (FORGE SHOP)



RAW MATERIAL YARD (CAPACITY 1000 MT)



**CIRCULAR SAW (FULLY AUTOMATIC)
CAPACITY = Ø120 MM | CYCLE TIME = 20 SECOND**



**PLANT IS EQUIPPED WITH INDUCTION BILLET HEATER WITH
3 WAY MECHANISM & DUEL COLOUR PYROMETER.**

RING ROLLING



1000 TON & 400 TON
MECHANICAL PRESS FOR
PRE-FORMING OPERATION



2.5 KG TO 40 KG
OD X ID X TH (200 X 50 X 15) IN MM
OD X ID X TH (500 X 450 X 125) IN MM
CAPACITY - 1200 MT/MONTH

UPSETTER

**CAPACITY 1400 MT/MONTH
3 KG TO 35 KG WITH MAX
FLANGE DIA UPTO 300 MM,
LENGTH UP TO 2000 MM**



7" UPSETTER 1 NO.



4" UPSETTER 1 NO.



2" UPSETTER 1 NO.

DROP HAMMER



**2.5 TON HAMMER 1 NO.
300 TON POWER PRESS FOR
TRIMMING 1 NO.**



**1.5 TON HAMMER 1 NO.
250 TON POWER PRESS FOR TRIMMING 1 NO.**

HAMMER CAPACITY : 1.5 KG. TO 30 KG. & DIAMETER 50 TO 300 MM

HEAT TREATMENT



HEAT TREATMENT (CONTINUOUS FURNACE)
FULLY AUTOMATED WITH PLC CONTROLLED SCADA SOFTWARE
(CAPACITY-600 MT/MONTH) NORMALIZING,
ISOTHERMAL ANNEALING AND HARDEN-TEMPERED (01 MT/HR)

TOOL ROOM FACILITIES



- ❁ 1 No. VMC BED SIZE (1050X610X610), 3 AXIS (MAKE BFW).
- ❁ 2 No. HEAVY DUTY VERTICAL MILLING MACHINES
 - ❁ 1 RADIAL DRILL MACHINE
 - ❁ 4 LATHE MACHINES 4FT
 - ❁ 1 LATHE MACHINE 6FT
 - ❁ 2 LATH MACHINE 7FT
 - ❁ 1 LATHE MACHINE 12FT
- ❁ SURFACE GRINDER (12"X1800 RPM)
 - ❁ 2 BENCH GRINDERS
 - ❁ 3 FLEXIBLE GRINDERRS

QUALITY CONTROL FACILITIES



MQC LAB



MICROSCOPE



UTM MACHINE



SPECTROMETER



HARDNESS TESTING



GRAIN FLOW CHECKING



MPI



PMI TESTING



SHOT BLASTING MACHINE

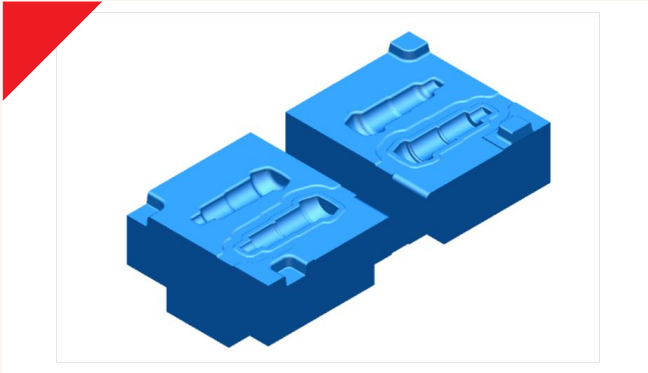


INPROCESS QUALITY CHECK



VISUAL INSPECTION

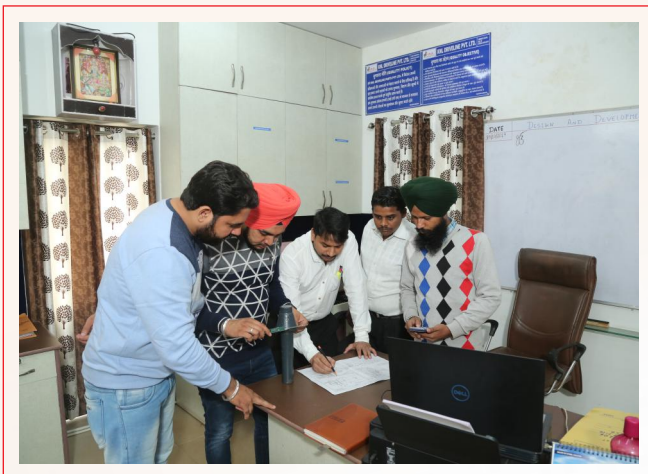
DESIGN, DEVELOPMENT & ENGINEERING



IN-HOUSE DIE DESIGN

WE HAVE FACILITIES FORGING SIMULATION SOFTWARE BY OUTSOURCING.

WE ARE USING SOFTWARE FOR DIE DESIGN:
SOLID WORKS, DELCAM, MASTERCAM & AUTOCAD



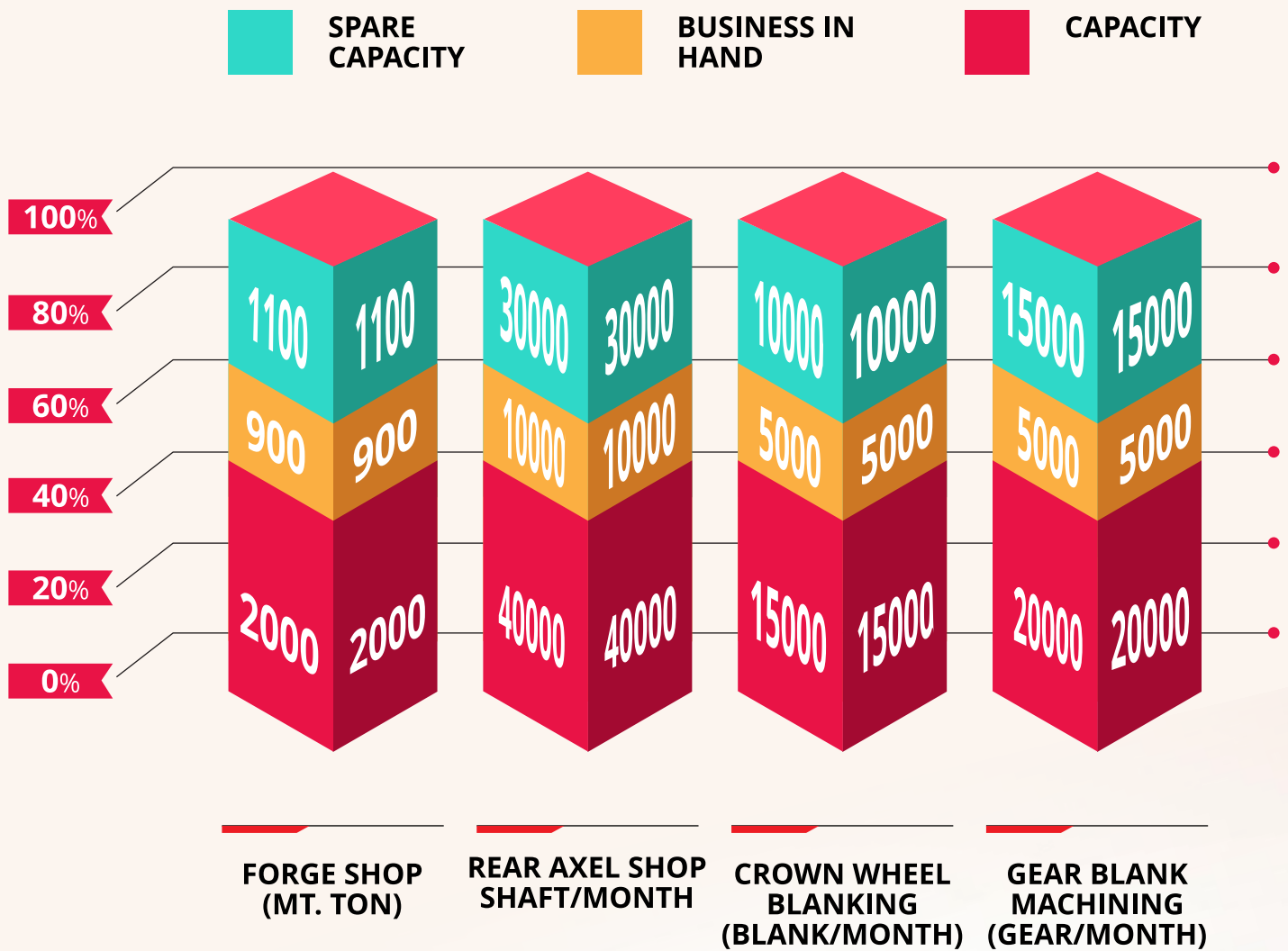
TEAM WORK FOR PROBLEM SOLVING.



CROSS FUNCTIONAL TEAM (CFT)

CAPACITIES UTILIZATION

ANNUAL CAPACITY UTILIZATION



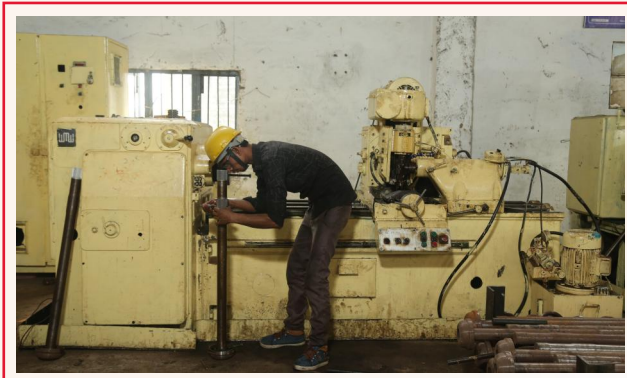
MACHINING INFRASTRUCTURE

PLANT – II (AXLE MACHINE SHOP)

TURNING M/C	RATING	MAKE	QUANTITY
CNC MACHINING CENTER	0-1250MM	MARSHALL	1 NOS
CNC MACHINING CENTER	0-1000MM	JYOTI	2 NOS
CNC MACHINING CENTER	0-700MM	MC POWER	1 NOS
TURNING LATHES	4"-12"	MAYA/RAJKOT	40 NOS
HOBBING/ ROLLING	RATING	MAKE	QUANTITY
SPLINE ROLLING	ZRM-6	GROB	1
RACK ROLLING	3237	MARAND	1
CNC HOBBING MACHINE	1200MM	PREMIER	1 NOS
SPLINE HOBBING MACHINE-HORIZONTAL	0-1MTR	WMW/RUSSIAN	6 NOS
SPLINE HOBBING MACHINE-VERTICAL	0-1.25MTR	RH-8/CLEVELAND	10 NOS
GRINDING	RATING	MAKE	QUANTITY
ANGURAL GRINDING M/C'S WITH AUTOMATIC GAUGING	800 MM	HMT/FORTUNA/TOSS	3 NOS
CYLINDRICAL GRINDERS	1MTR	HMT/FORTUNA/TOSS	4 NOS
	800-1000 MM	HMT/FORTUNA/TOSS	3 NOS
	500 MM	HMT/FORTUNA/TOSS	3 NOS
CNC ANGULAR HEAD GRINDER WITH AUTOMATIC GAUGING	1 MTR	BESTEK	3 NOS
TAPPING M/C'S	RATING	MAKE	QUANTITY
VERTICAL PITCH CONTROL TAPPING MACHINE	0-50MM	LOCAL	2 NOS
TAPPING ARM PNEUMATIC	0-25MM	RASCAMAT	2 NOS
DRILLING	RATING	MAKE	QUANTITY
RADIAL DRILLS	2 INCH	WMW/HMT	10 NOS
MUTI-DRILLING M/C'S	2 INCH	JISKO	4 NOS

PLANT GALLERY

PLANT - II (AXLE MACHINE SHOP)



MACHINING INFRASTRUCTURE

PLANT - III (GEARS & CROWN WHEEL BLANK MACHINING))

TURNING M/C	RATING	MAKE	QUANTITY
CNC TURNING CENTRE	300 X 450	JYOTI	4
VMC	600X400X400	JYOTI	1
VMC	800X500*500	JYOTI	1
LATHE	300 MM X 9 FT	PARAS	1
LATHE	500 MM X 9 FT	PARAS	1
LATHE	300 MM X 7 FT	PARAS	2
RADIAL DRILLING M/C	38 MM	MMT	1
PILLER DRILLING MC	1"	MMT	1
MILLING M/C	1 MT X 300	VERNIER	1
VTL	500 X 500	JYOTI	1
VTL	500 X 500	JYOTI	1
BAND SAW	UPTO 250 MM	LEFON	2

PLANT GALLERY

PLANT - III (GEARS & CROWN WHEEL BLANK MACHINING))

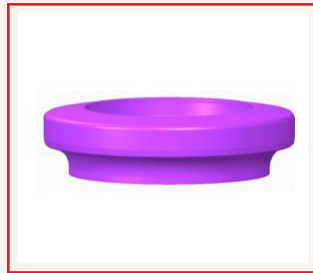
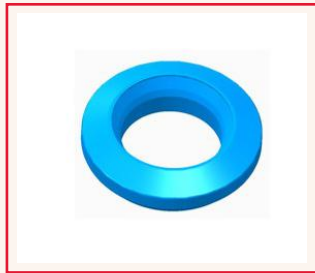
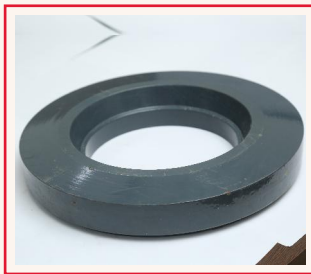
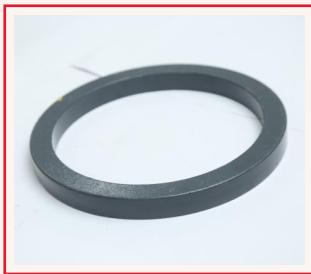


SPECIAL FEATURES

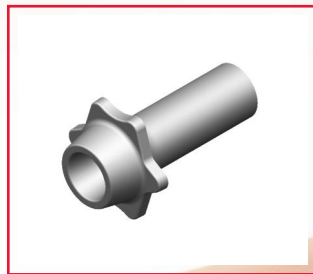
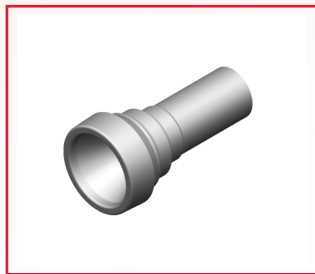
- ⚙️ DEDICATED MACHINING LINES.
- ⚙️ ONLINE QUALITY INSPECTION (SET UP APPROVALS. IN PROCESS INSPECTION)
- ⚙️ ROUTE CARD WITH FIFO SYSTEM (MAINTAINING UNIFORMITY OF RM HEAT CODES AND HEAT TREATMENT CODES.)
- ⚙️ MATERIAL HANDLING USING MANIPULATORS.
- ⚙️ GREEN MACHINING-INDUCTION HARDENING & HARD TURNING IN ONE LINE.
- ⚙️ STATISTICAL PROCESS CONTROL ON CRITICAL PARAMETERS.

FORGED PRODUCTS

RING ROLLING



HORIZONTAL UPSETTER



FORGED PRODUCTS

DROP HAMMER



MACHINED PRODUCTS

TRANSMISSION GEAR, SHAFTS, CROWN WHEEL & PINION BLANKS



HYDRAULIC LIFT ASSEMBLY PARTS



LIFT ARMS

SIDE CENTRE ARM
(ROCKER ARM)

HYDRAULIC LIFT ARM

REAR AXLE SHAFT AND YOKE SHAFT



REAR AXLE SHAFTS

SPLINE YOKE

FRONT AXLE YOKE

REAR AXLE SHAFTS

REAR AXLE SHAFT

REAR AXLE SHAFT

BRAKE S-CAM SHAFT



BRAKE S-CAM SHAFT

3 POINT LINKAGE PARTS



EYE BOLT



SWIVEL HANDLE HITCH PIN



EYE BOLT



**COUNTYLINE SAFETY
LOCK HITCH PIN**



TOP LINK PIN



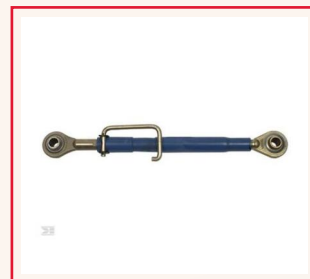
PTO ADAPTOR



**COUNTYLINE LIFT ARM
LEVELING ASSEMBLY**



SLEEVE (BUSH)



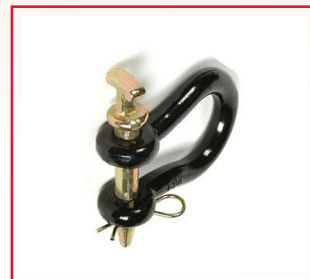
TOP LINK ASSEMBLY



WELDON END

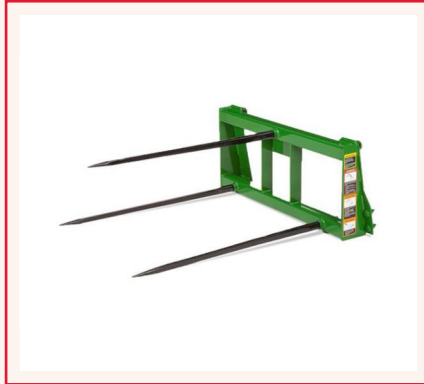


**LIFT ARMS FOR
COMPACT TRACTOR**

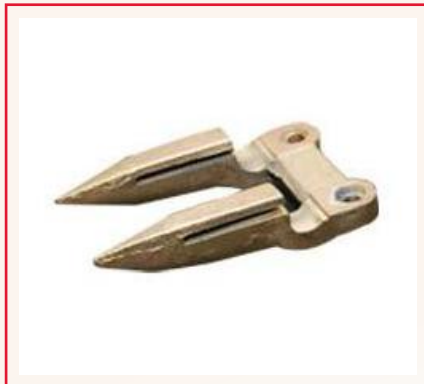


**COUNTYLINE STRAIGHT
CLEVIS PIN & CLIP**

BALE SPEARS



SICKLE GUARDS (COMBINE HARVESTER PARTS)

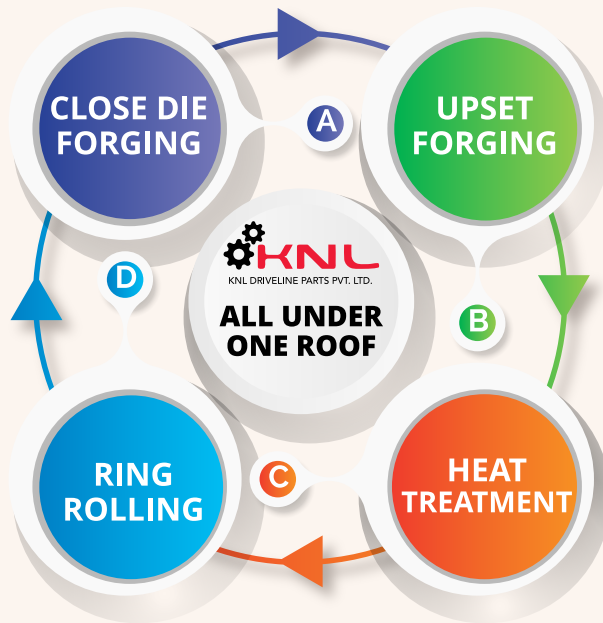


OUR GROUP VALUED CUSTOMERS

VE COMMERCIAL VEHICLES

A VOLVO GROUP AND EICHER MOTORS JOINT VENTURE





CERTIFICATION





KNL DRIVELINE PARTS PVT. LTD.



ADDRESS

Vill. Nichi Mangli, Adjoining Phase-VII, Focal Point,
Ludhiana, Punjab 141010, INDIA.



PHONE

+91 84377 55555



EMAIL

info@knldriveline.com
chetan.garg@knldriveline.com



WEBSITE

www.knldriveline.com